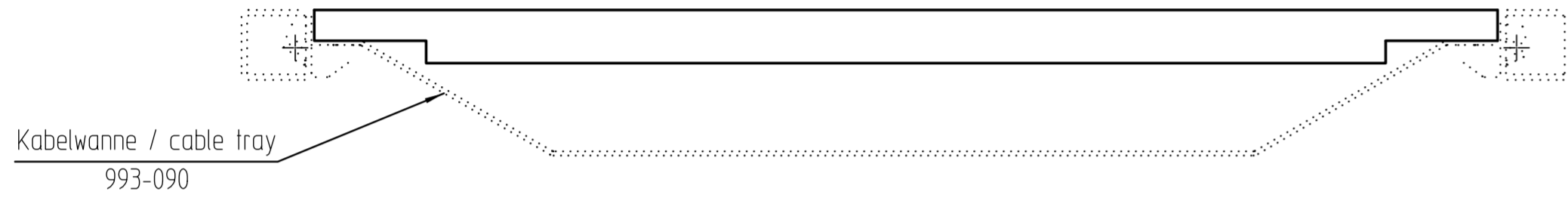


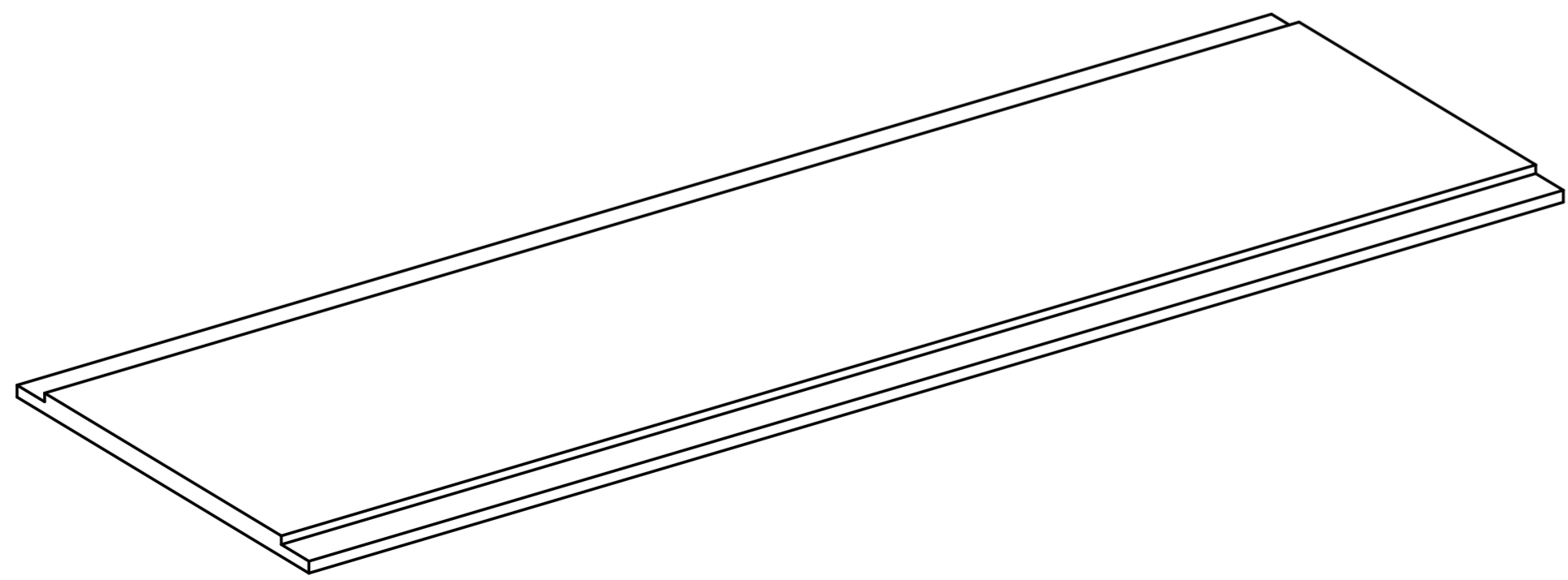
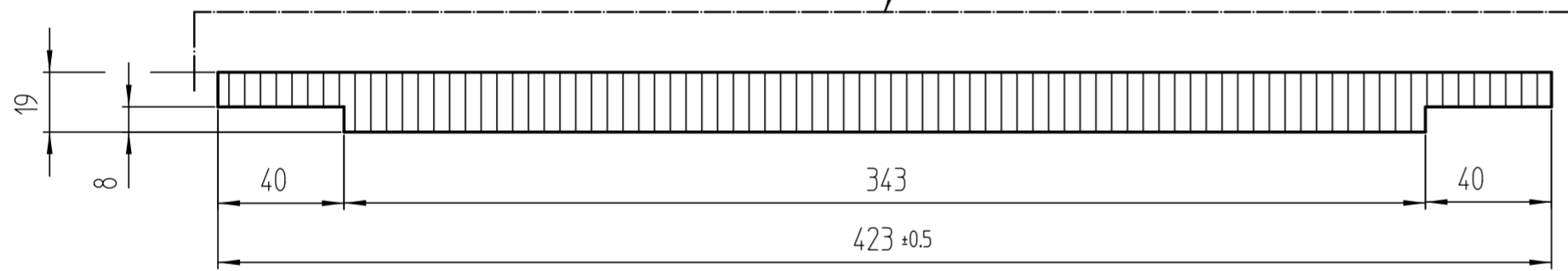
Einbausituation / installation Qubo25
 Tablarträger / base support



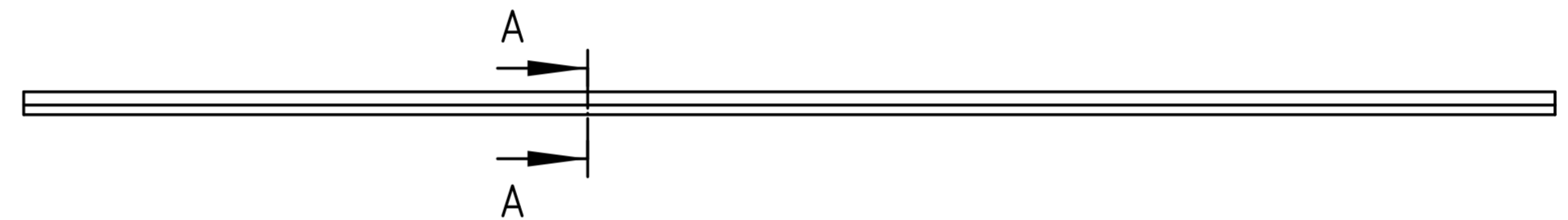
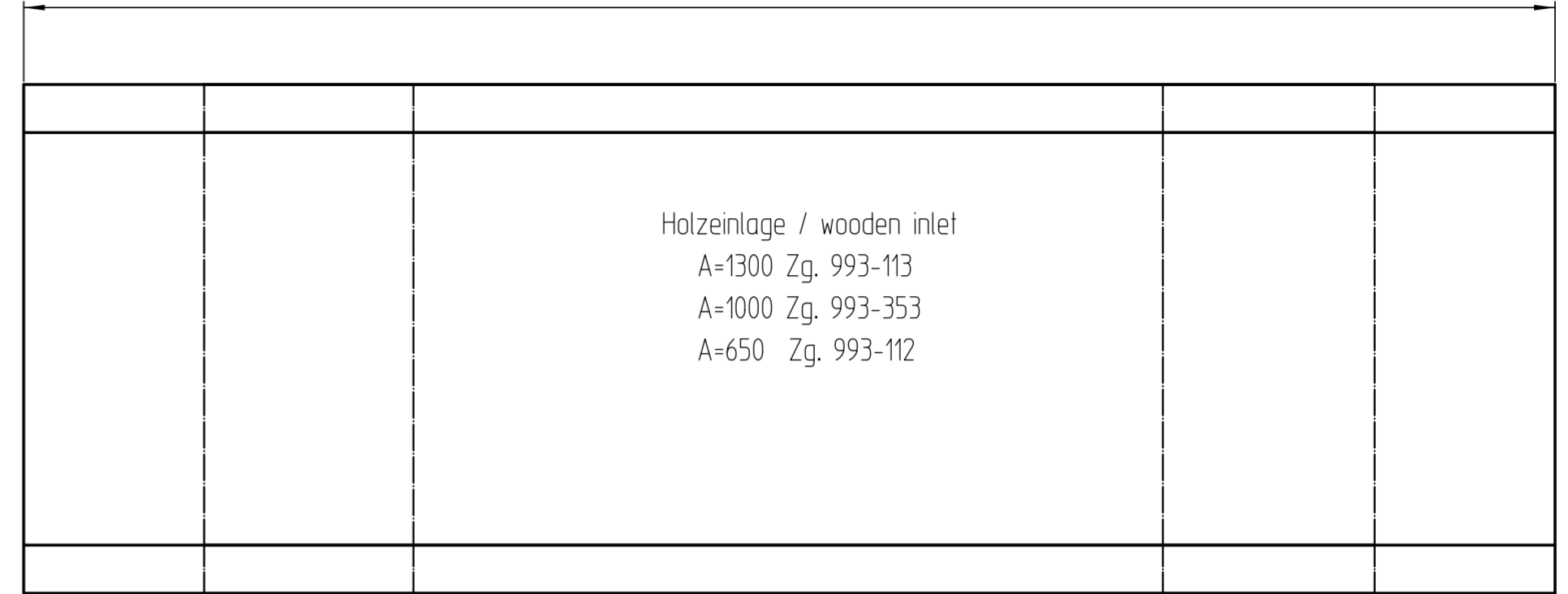
Einbausituation / installation Qubo25
 Kabelwanne / cable tray



A-A
 1:2
 Oberseite Sichtfläche/
 Visible area on top



Achse 650 / 1000 / 1300 = 1273 / 973 / 623 ±0.5



Plattenwerkstoff und Oberfläche nach Auftrag
 Schmalseiten lackiert oder belegt
 Kanten gerundet

Board material and finish to order
 Narrow sides lacquered or overlaid
 Rounded edges

Piece	Designation/Description	Drawing/Mat.-Nr.	Pos	Material	DIN/VBN	Remark
Changes	C Überarbeitung					Uecker_M 05.12.17
	B Eng. Text hinzu					Ewald_A 03.07.17
Used by	Date	Name	Weight/kg	15,916	Development No.	
Designed	03.02.2017	Ewald_A	Free Dim. Tol.	Main Scale	993-117	2 C 1/1
Released	10.01.19	Studer_A	HT 25	1:10	Replacement for	
In Change						
Designation						
Project						
Customer 991						
www.visplay.com						
Holzeinlage für Regale Wooden inlay for shelf unit						
						visplay

Any intellectual property right subsisting in this drawing is owned by our companies. Transmitting, using or copying without permission is prohibited. Ohne unsere Genehmigung darf diese Zeichnung weder kopiert noch an Drittpersonen weitergegeben werden.